

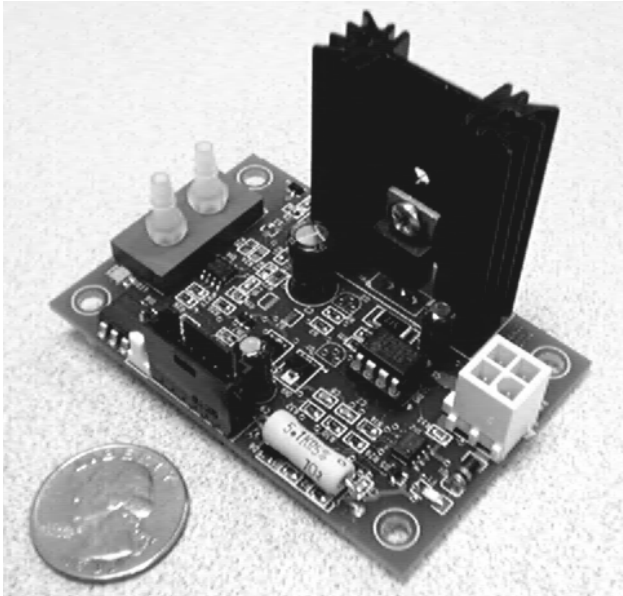


POLAR CONTROLS, INC.

2 Shaker Road, Suite D-205  
 Shirley, MA 01464  
 Phone: (978) 425-2233  
 Fax: (707) 220-2411  
 Web: www.polarcontrols.com

# PCI-1053

## Intelligent Phase Angle Control Module

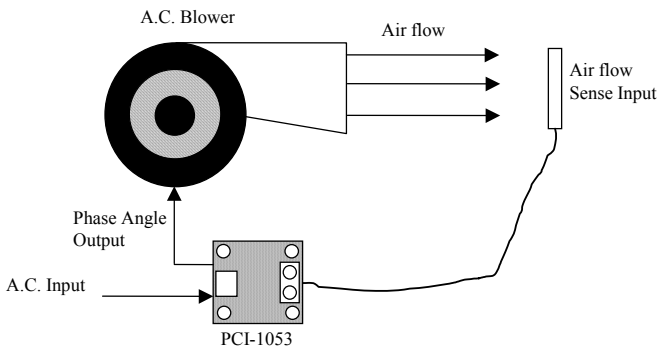


PCI's 1053 revolutionizes the control of AC motors by providing the same level of functionality that is normally reserved for DC motors – but at a much reduced cost. The embedded microcontroller allows a designer to incorporate precise temperature, airflow, differential pressure, filter monitoring, and speed control functions into an AC based air moving system.

The PCI 1053 breaks the cost/size/performance barrier by combining all the necessary electrical components onto a single unit. Installation can be as simple as putting it in line with the AC power.

In addition to a variable phase angle output, the unit has an opto-isolated solid state switch output and an on-board bi-color led.

By integrating a variety of sensor inputs, a phase angle output and micro-controller intelligence into a compact, low cost package – the PCI-1053 is an ideal component for many embedded applications.



A sample application where the PCI-1053 is used to maintain a constant airflow with an AC powered blower.

Characteristic	Min	Typ	Max	Units	Conditions
Supply Voltage	90	115	135	VAC	50 – 60 Hz Leads 1,2 of Connector J2 (220VAC version available)
Supply Current			10	Amps AC	No flow, 25 degree C. ambient
Output					On/Off Phase Angle Control of Input Leads 3,4 of Connector J2
Operating Temperature Range	0		65	Deg. C.	Extended Range Available
Humidity Range	5%		95%	RH	Non-Condensing
Measurement Airflow Range	20		10,000	Ft/Min	
Measurement Pressure Range	0		1 5	inches H2O	
Measurement Temperature Range	-20		+85	Deg. C.	
Switch Isolation			2500	VAC	Connection: J4
Switch Blocking voltage			350	Volts	
Switch Current			100	mAmps	